

Henley Traditional Cabinet Pull Handle

C3960 102-SN



Heritage Brass Cabinet Pull Henley Traditional Design 102mm CTC Satin Nickel Finish

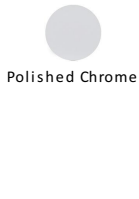
Material:
Solid Brass

Finish:
Satin Nickel

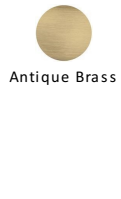
Available Finishes



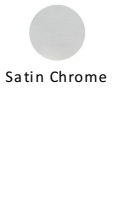
Polished Brass



Polished Chrome



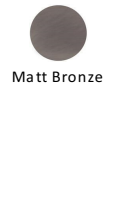
Antique Brass



Satin Chrome



Satin Nickel



Matt Bronze



Satin Brass

Available Sizes



102 mm



152 mm



203 mm

Product Dimensions (All dimensions are in millimeters unless otherwise indicated)

Length	117	CTC	102	Projection	41	Base	15
---------------	-----	------------	-----	-------------------	----	-------------	----

About the Finish

Satin Nickel

With its honeyed grey tone created by brushed nickel plating on brass, this finish closely matches Stainless Steel but offers a warm and subtle alternative which is popular in traditional and modern décors.

Useful Information

- If replacing an existing Cabinet Pull it may be simpler to install if you select a pull which matches the existing centre to centre of the screw holes

Box Contains

- 1 x Cabinet Pull
- All fixing screws and fasteners

+971 (0) 43559265

www.heritagebrass-uae.com

office@heritagebrass-uae.com

Property of M Marcus Ltd. ©