

Phoenix Cabinet Pull Handle

V4434 160-PB



Heritage Brass Cabinet Pull Phoenix Design 160mm CTC Polished Brass finish

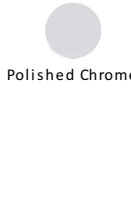
Material:
Solid Brass

Finish:
Polished Brass

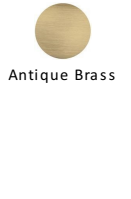
Available Finishes



Polished Brass



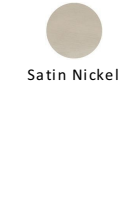
Polished Chrome



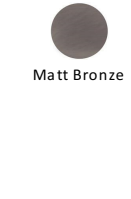
Antique Brass



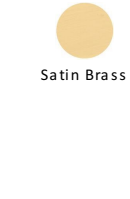
Satin Chrome



Satin Nickel



Matt Bronze



Satin Brass

Available Sizes



96 mm



128 mm



160 mm

Product Dimensions (All dimensions are in millimeters unless otherwise indicated)

Length	179	CTC	160	Projection	32.5	Maximum Diameter	11
Base	8						

About the Finish

Polished Brass

Warm, mellow with a sense of heritage and comfort this highly polished finish is opulent without being flamboyant. Polished Brass coordinates perfectly with traditional décor.

Useful Information

- If replacing an existing Cabinet Pull it may be simpler to install if you select a pull which matches the existing centre to centre of the screw holes

Box Contains

- 1 x Cabinet Pull
- All fixing screws and fasteners

+971 (0) 43559265

www.heritagebrass-uae.com

office@heritagebrass-uae.com

Property of M Marcus Ltd. ©