

## Phoenix Cabinet Pull Handle

V4434 160-PNF



Heritage Brass Cabinet Pull Phoenix Design 160mm CTC Polished Nickel finish

**Material:**

Solid Brass

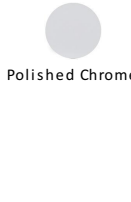
**Finish:**

Polished Nickel Finish

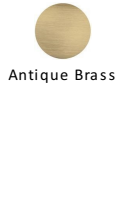
### Available Finishes



Polished Brass



Polished Chrome



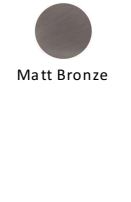
Antique Brass



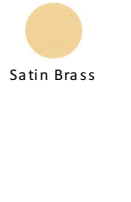
Satin Chrome



Satin Nickel



Matt Bronze



Satin Brass

### Available Sizes



96 mm



128 mm



160 mm

### Product Dimensions (All dimensions are in millimeters unless otherwise indicated)

|        |     |     |     |            |      |                  |    |
|--------|-----|-----|-----|------------|------|------------------|----|
| Length | 179 | CTC | 160 | Projection | 32.5 | Maximum Diameter | 11 |
| Base   | 8   |     |     |            |      |                  |    |

### About the Finish

**Polished Nickel Finish**

With its subtle golden hue this is a mellow alternative to polished chrome. The finish is not coated and will oxidise naturally. If not regularly buffed with a soft cloth this finish will subtly change over time by taking on an aged patina.

### Useful Information

- If replacing an existing Cabinet Pull it may be simpler to install if you select a pull which matches the existing centre to centre of the screw holes

### Box Contains

- 1 x Cabinet Pull
- All fixing screws and fasteners

+971 (0) 43559265

[www.heritagebrass-uae.com](http://www.heritagebrass-uae.com)

[office@heritagebrass-uae.com](mailto:office@heritagebrass-uae.com)

Property of M Marcus Ltd. ©