

## Partial Knurled Cabinet Pull Handle

V4461 96-SC



Heritage Brass Cabinet Pull Partial Knurl Design 96mm CTC Satin Chrome finish

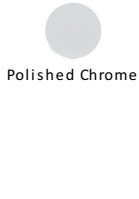
**Material:**  
Solid Brass

**Finish:**  
Satin Chrome

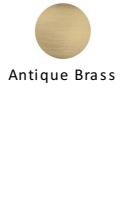
### Available Finishes



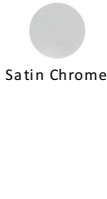
Polished Brass



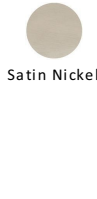
Polished Chrome



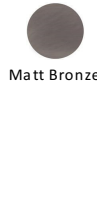
Antique Brass



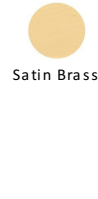
Satin Chrome



Satin Nickel



Matt Bronze



Satin Brass

### Product Dimensions (All dimensions are in millimeters unless otherwise indicated)

<b>Length</b>	122	<b>CTC</b>	96	<b>Projection</b>	30.5	<b>Maximum Diameter</b>	11
<b>Base</b>	8						

### About the Finish

#### Satin Chrome

The brush marks of satin chrome will appeal to those who favour an industrial yet contemporary chrome finish. Satin Chrome Finish is also less prone to finger marks than polished chrome.

### Useful Information

- If replacing an existing Cabinet Pull it may be simpler to install if you select a pull which matches the existing centre to centre of the screw holes

### Box Contains

- 1 x Cabinet Pull
- All fixing screws and fasteners

+971 (0) 43559265

[www.heritagebrass-uae.com](http://www.heritagebrass-uae.com)

[office@heritagebrass-uae.com](mailto:office@heritagebrass-uae.com)

Property of M Marcus Ltd. ©