

## Partial Knurled Cabinet Pull Handle

V4461 96-SN



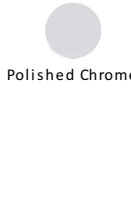
Heritage Brass Cabinet Pull Partial Knurl Design 96mm CTC Satin Nickel finish

**Material:**  
Solid Brass**Finish:**  
Satin Nickel

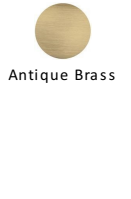
### Available Finishes



Polished Brass



Polished Chrome



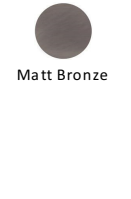
Antique Brass



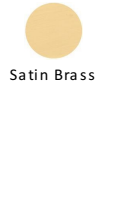
Satin Chrome



Satin Nickel



Matt Bronze



Satin Brass

### Available Sizes



96 mm



128 mm



160 mm



192 mm



254 mm

### Product Dimensions (All dimensions are in millimeters unless otherwise indicated)

<b>Length</b>	122	<b>CTC</b>	96	<b>Projection</b>	30.5	<b>Maximum Diameter</b>	11
<b>Base</b>	8						

### About the Finish

#### Satin Nickel

With its honeyed grey tone created by brushed nickel plating on brass, this finish closely matches Stainless Steel but offers a warm and subtle alternative which is popular in traditional and modern décors.

### Useful Information

- If replacing an existing Cabinet Pull it may be simpler to install if you select a pull which matches the existing centre to centre of the screw holes

### Box Contains

- 1 x Cabinet Pull
- All fixing screws and fasteners

+971 (0) 43559265

www.heritagebrass-uae.com

office@heritagebrass-uae.com